

Structural reports and structural reinforcement projects



www.jgvengenharia.com.br

www.jgvlaudos.com.br

☎ (15)3228-2460 ☎ (15)3218-1739

Av.Eng.Reinaldo Mendes, 3200/ Sala 606/Edifício Ilimitado/Sorocaba/SP



ABOUT US

JGV Engenharia is a company that stands out for the quality of its reports and projects, valuing the most economical solutions and the greatest executive ease, applying the most advanced standards and concepts in the market.

With more than 20 years of experience in structural calculations and detailed projects, we serve many project types, whether national or international.

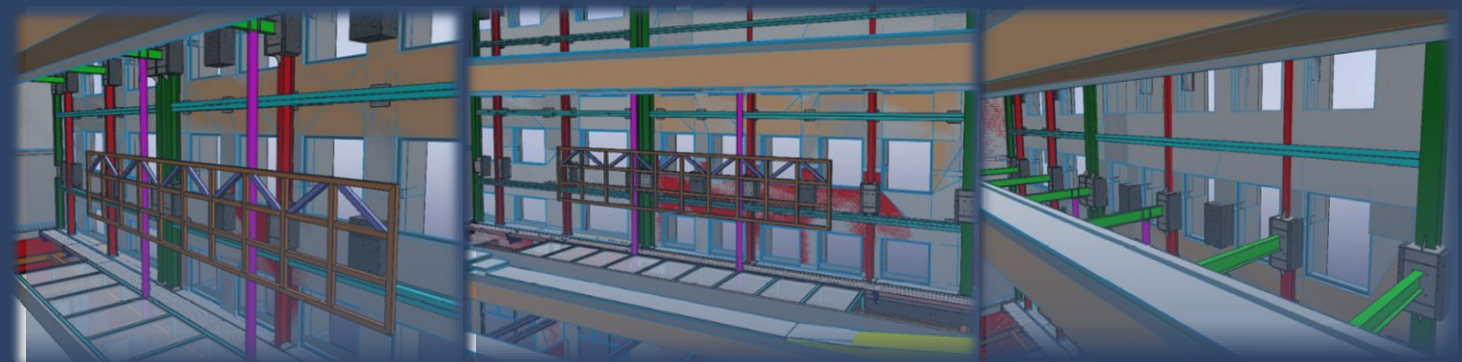
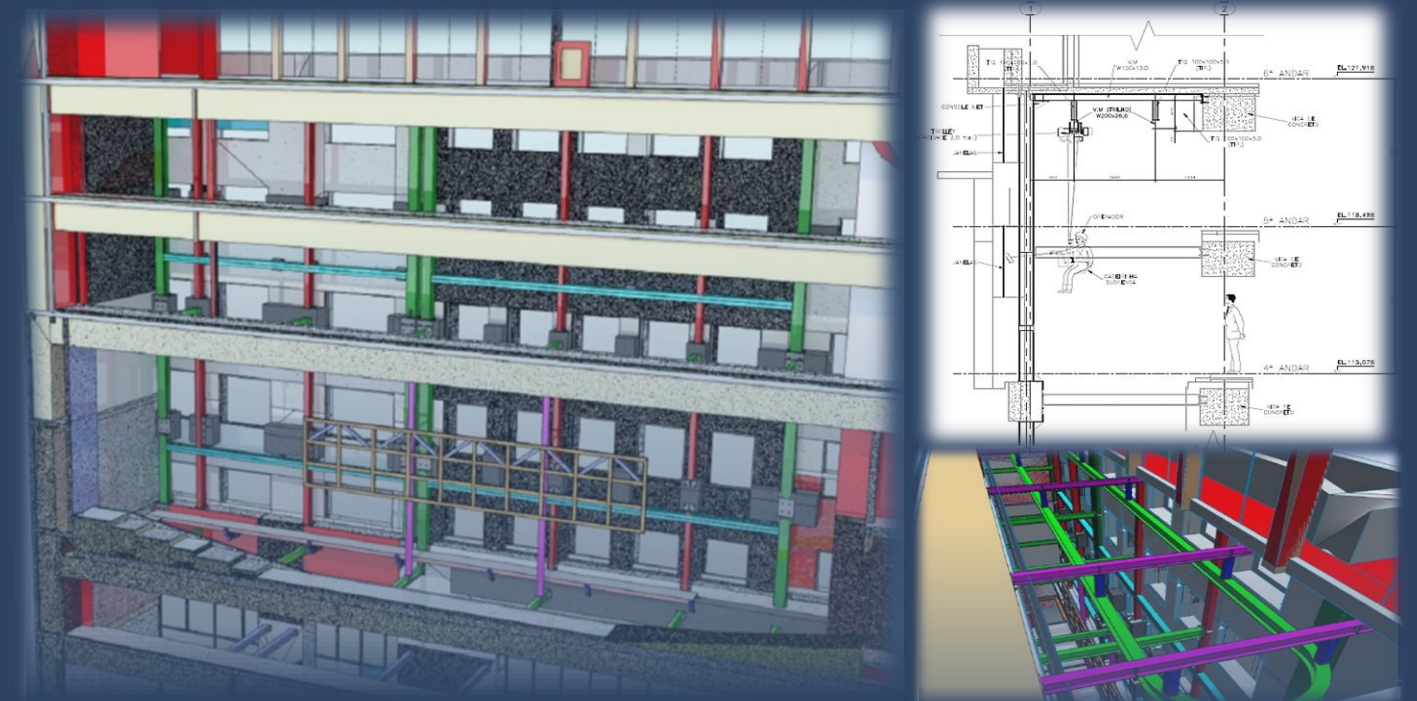
The company stands out with services provided in all of Brazil, establishing a professional concept through advanced technical capacity and reliability from our customers, looking for excellence in their projects.



FEATURED REPORT

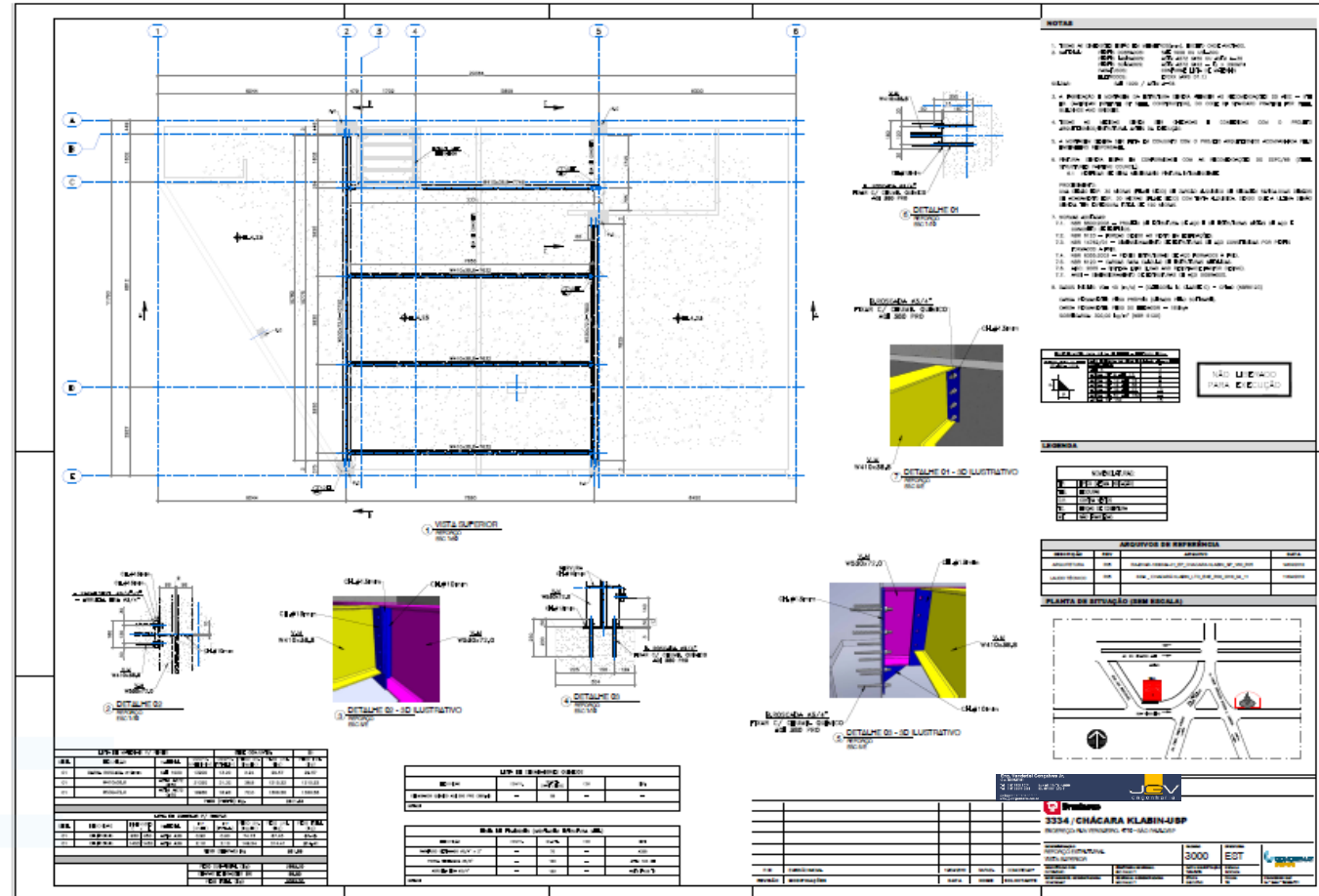
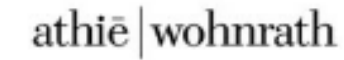


Report and design of structural reinforcement for a concrete slab cutout, preventing the structural collapse and further damage to the historic heritage of the B3 building (Stock Exchange), located in the square Antônio Prado in downtown São Paulo, Brasil.



Also, included in this project, a 12-meter long panel, a glass walkway and line system for the building's façade maintenance.

MAIN CLIENTS:



CONTACT US

Eng. Vanderlei Gonçalves Junior
CREA 5061481881

Eng. Leonardo Tavares
CREA 5070433470

+55 (15) 9 9644-0986
jgv@jgvengenharia.com.br

+55 (15) 9 9197-7948
leonardo@jgvengenharia.com.br

FOR MORE INFORMATION, CHECK OUT THE LINKS BELOW:

TO ACCESS THE LINKS DIRECT FROM YOUR SMARTPHONE:
1-) GO TO YOUR DEVICE'S CAMERA APP
2-) TARGET THIS SYMBOL (QR CODE) FOR ABOUT 2 OR 3 SECONDS
3-) ALL SET! YOU SHOULD GO RIGHT TO THE INTENDED PAGE

JGV ENGENHARIA INTERVIEW
MUNDO EMPRESARIA

<https://youtu.be/O3t1nGrGG0o>



JGV ENGENHARIA WEBSITE - PROJECTS

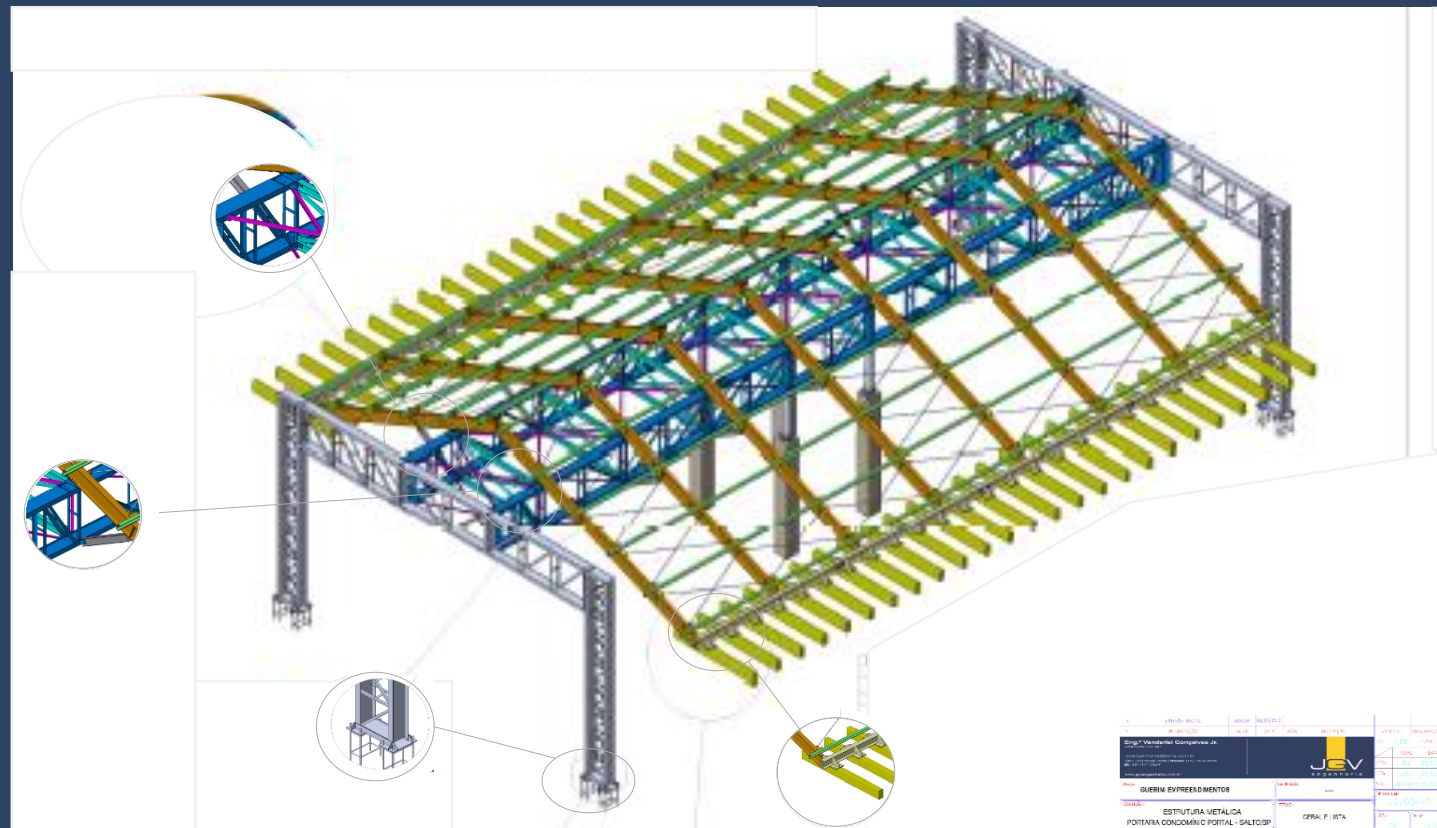
<http://www.jgvengenharia.com.br/>

JGV ENGENHARIA WEBSITE - REPORTS:

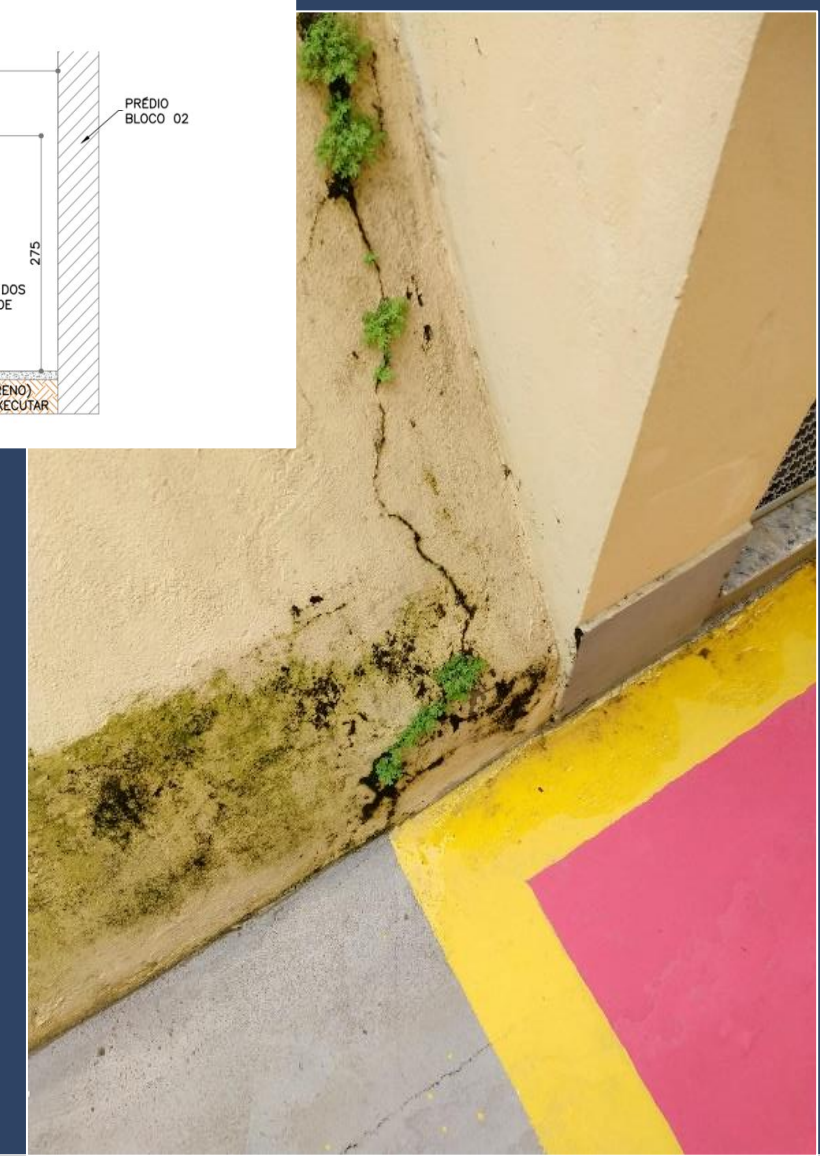
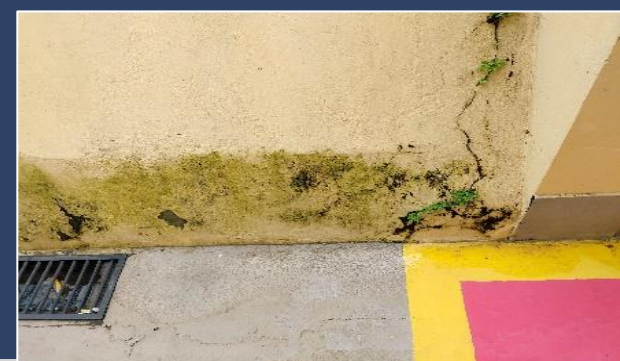
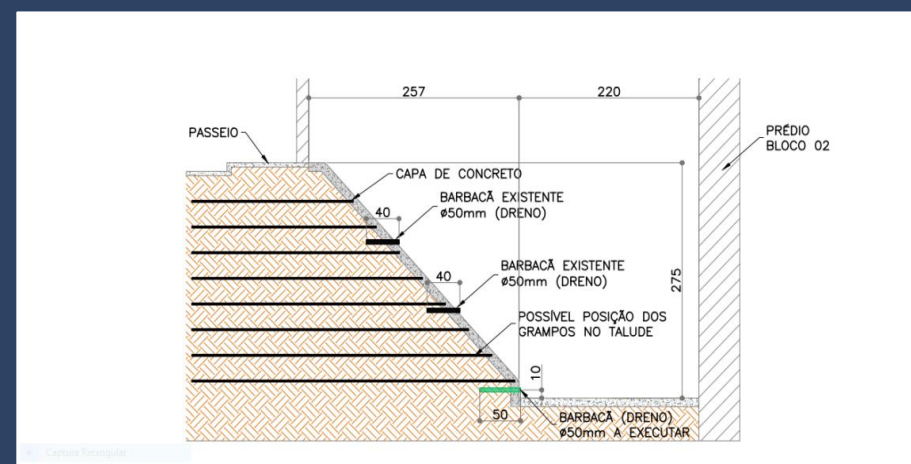
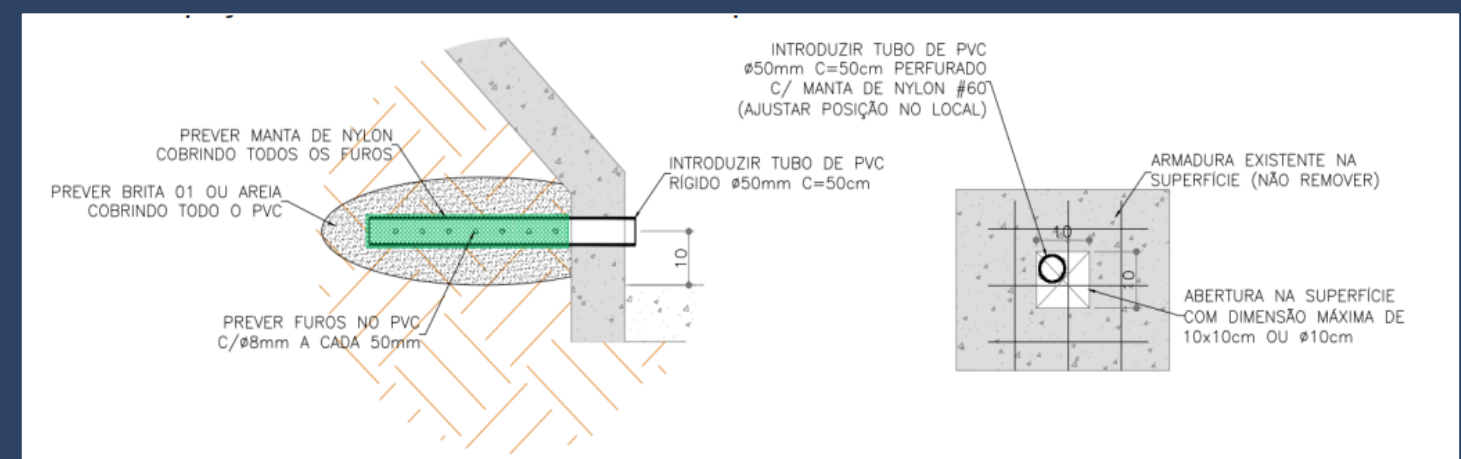
<http://www.jgvlaudos.com.br/>



Structural Reinforcement Report and Project to determine the necessary reinforcements in the beams for setting up a concrete slab cutout, further enabling the passage of the new elevator to suit the accessibility standards.



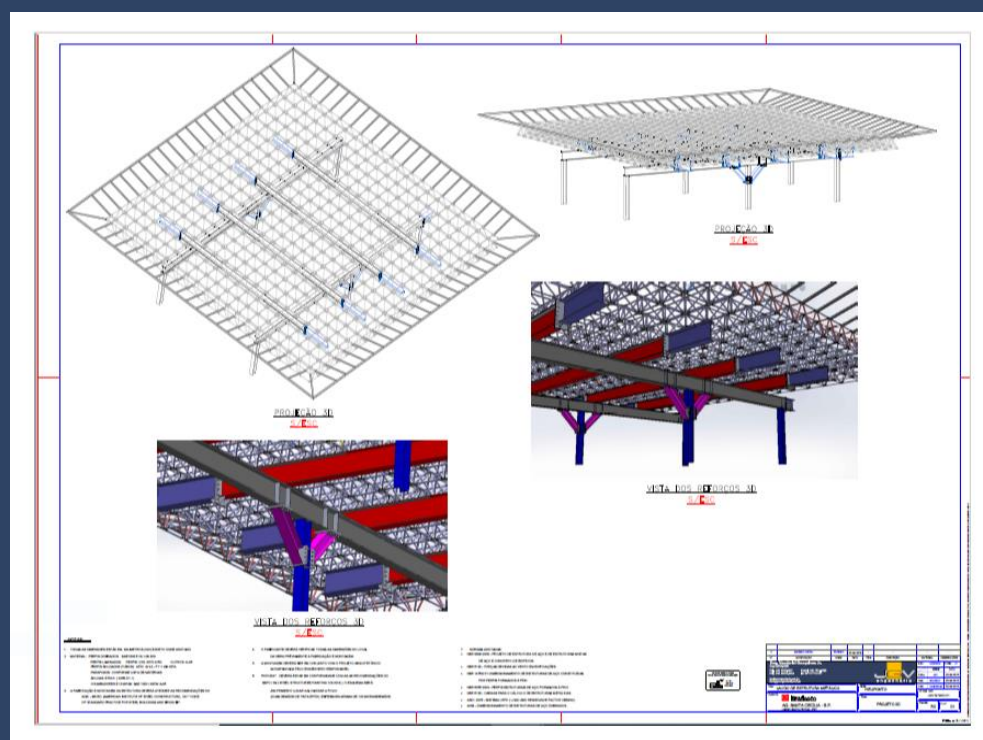
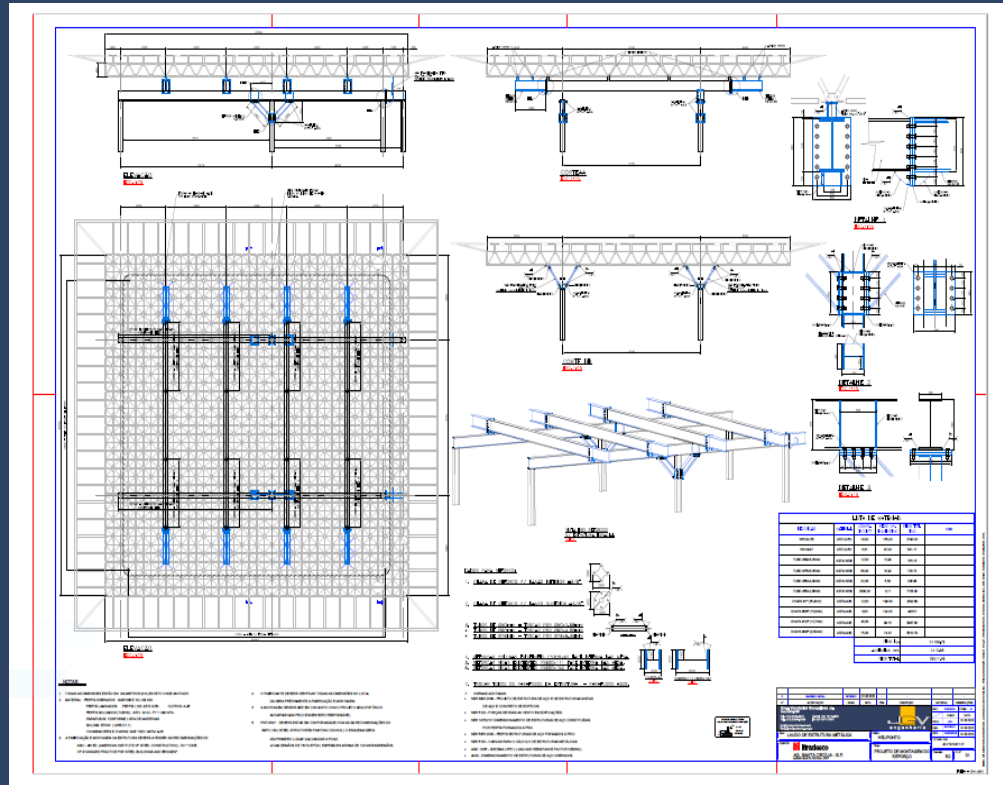
Due to dimensioning problems in the metal profiles, defective welds and loose connections, the metal structure partly gave way, before the assembly phase of the structure had even finished. JGV Engenharia was responsible for preparing the report and structural reinforcement projects for the roof, filling a span of 50 meters in metallic structure and ceramic tiles.



JGV Engenharia was called upon to carry out periodic verification of the containment structure of Fundação Bradesco in Salvador / BA. During our visit we noticed several cracks in the containment walls and accumulation of humidity in their base. With that, we recommended the correction of pathologies through the installation of new drains in the containment, in addition to cleaning and maintaining the existing drains.

BRADESCO

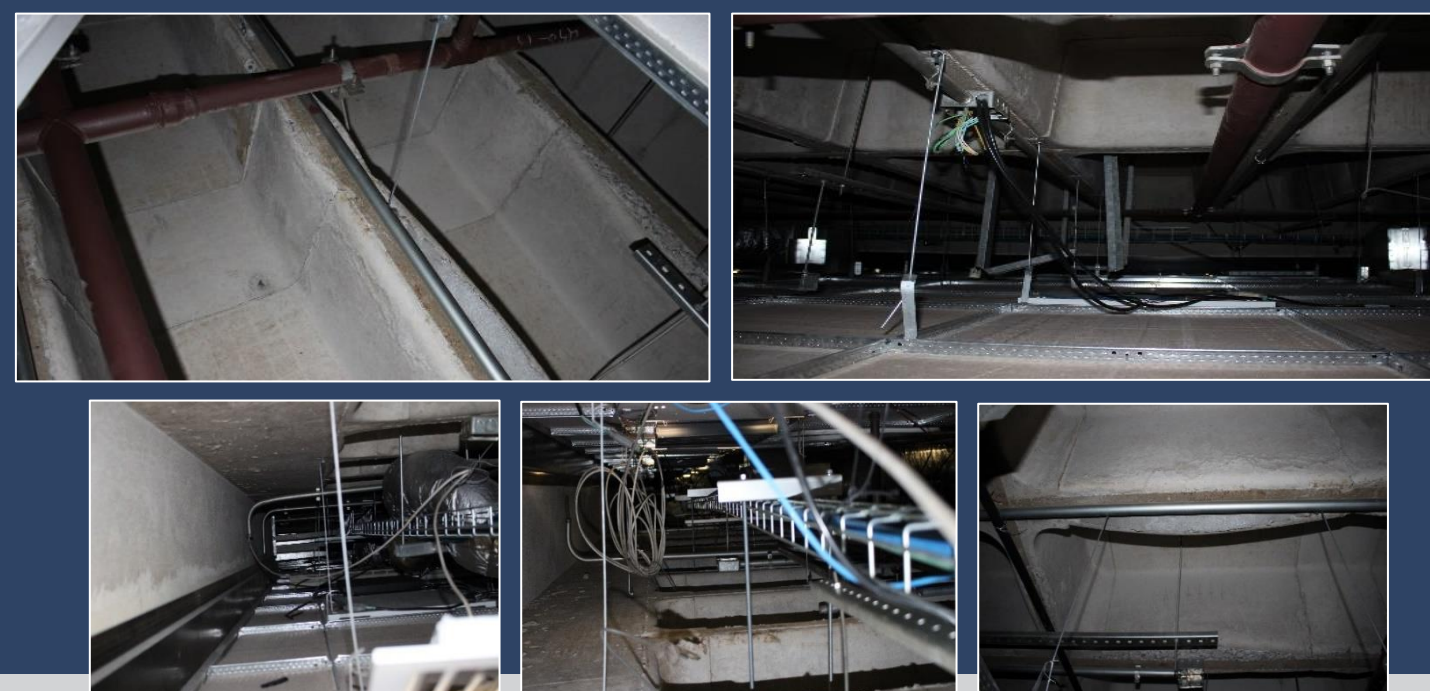
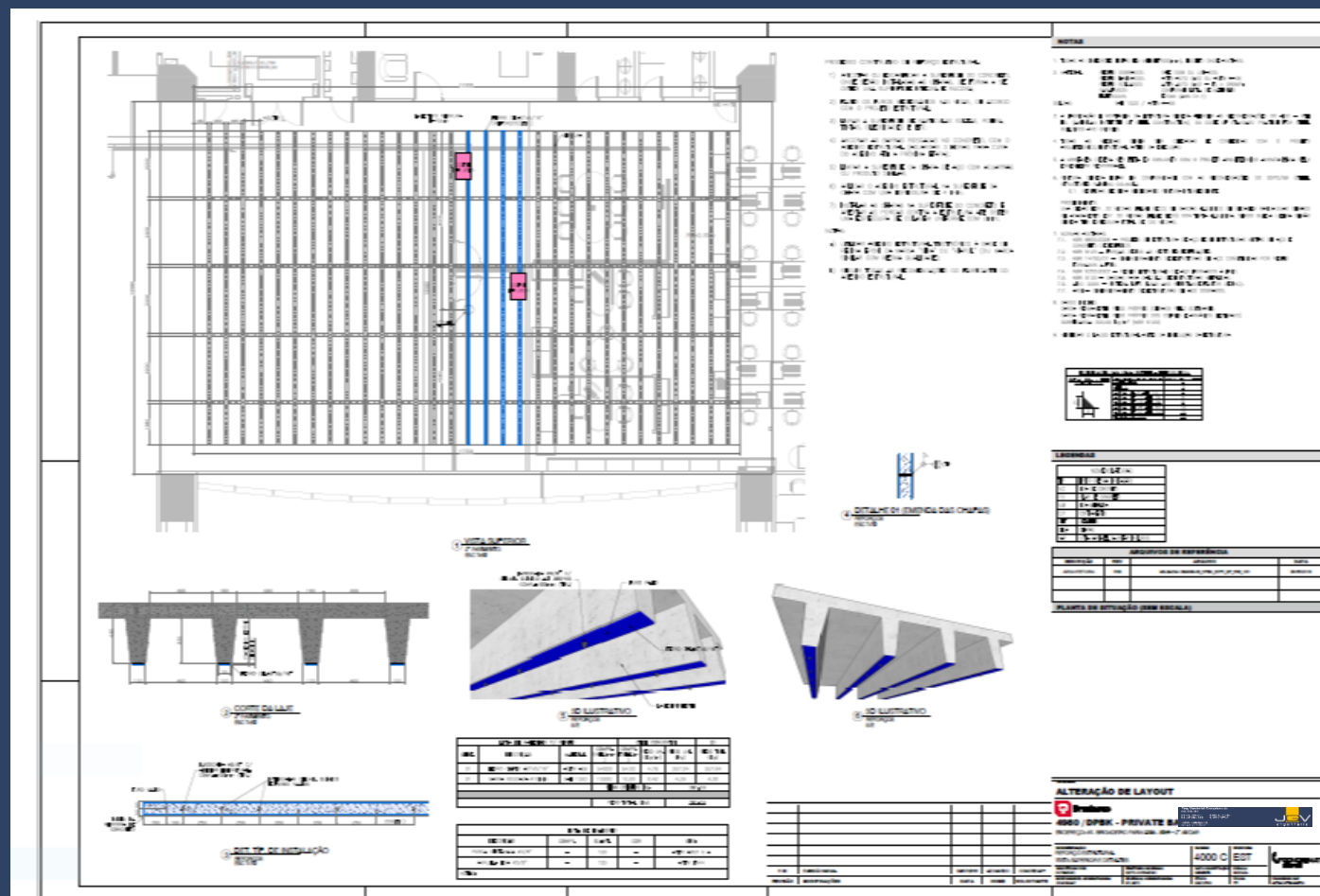
AG. SANTA CECÍLIA /SP, BRASIL



The Helipad in downtown São Paulo used to suffer from structural displacements caused by the aircraft landing and take-off operation, due to dimensioning problems aggravated by the oxidation of the bars and tubular connection nodes. JGV Engenharia indicated and designed all reinforcement measures and structural recovery of the Helipad, improving the distribution of loads in the special structure and treating pathologies, enabling the return of Helipad operations.

CONCREMAT

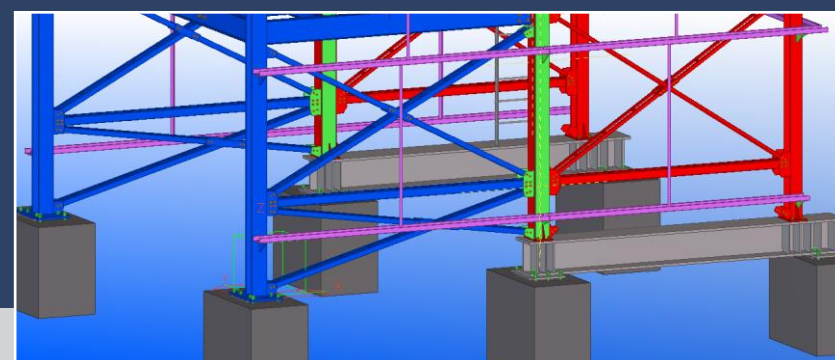
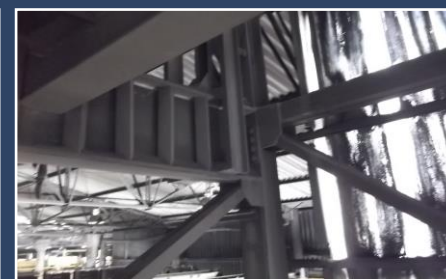
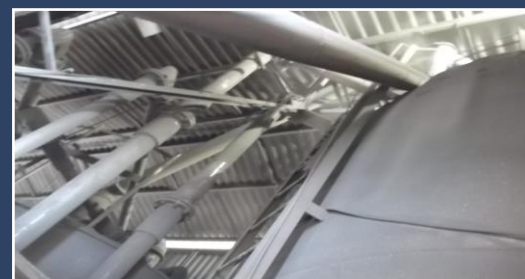
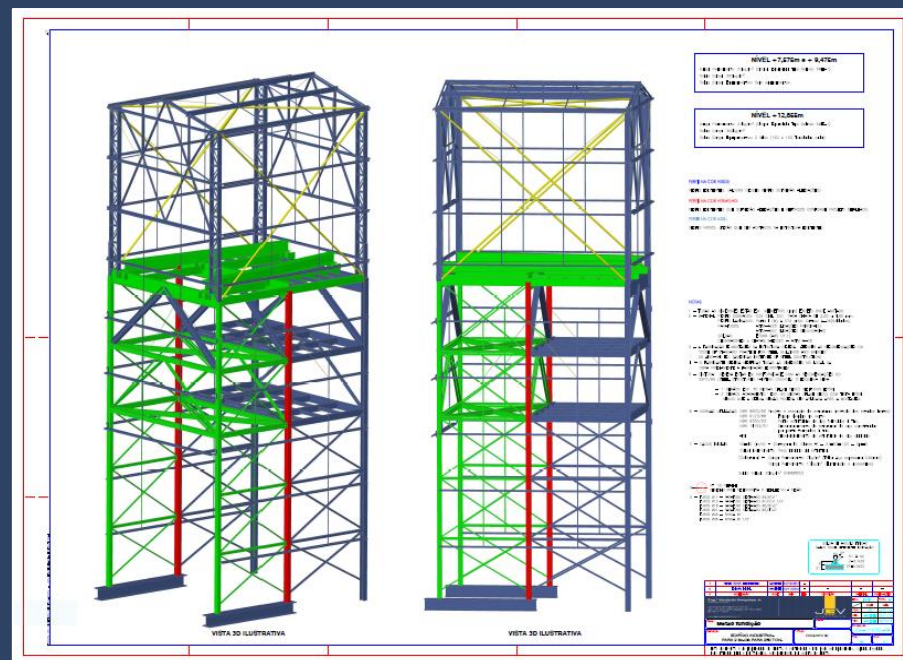
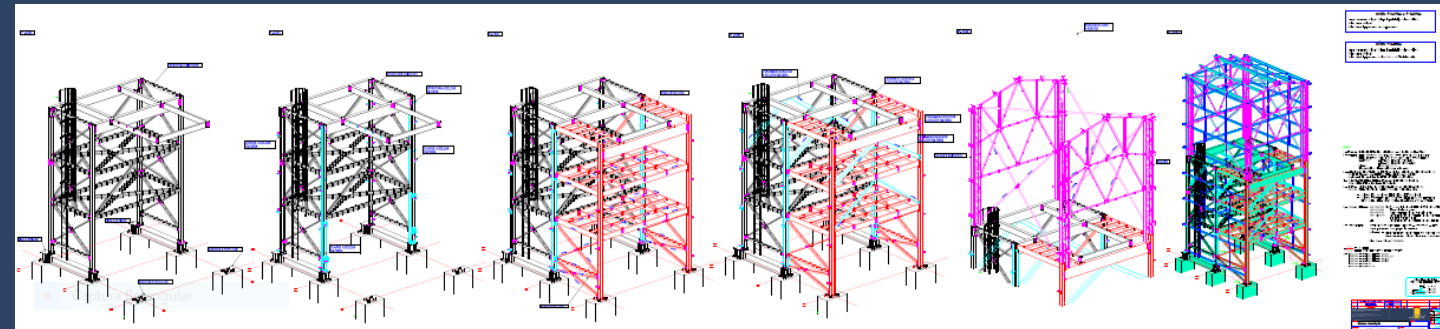
ITAIM BIBI-SÃO PAULO /SP, BRASIL



Technical Report and Structural Reinforcement Project for the installation of two safes at a branch of Banco Bradesco in São Paulo. We found that with the installation of the two safes, the ribbed slab would present displacements. JGV Engenharia developed the structural reinforcement project through sheets glued to the ribs, increasing the slab's load capacity in the section where the safes were installed.

METSO

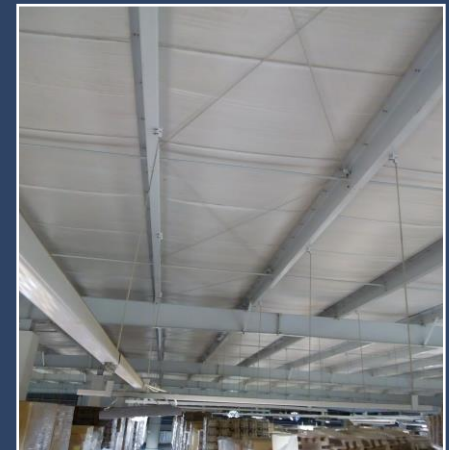
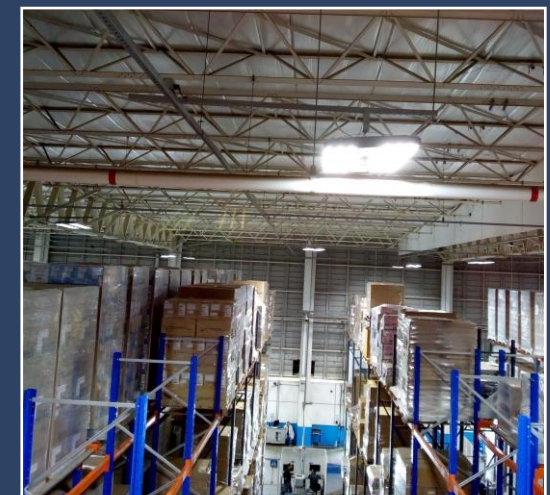
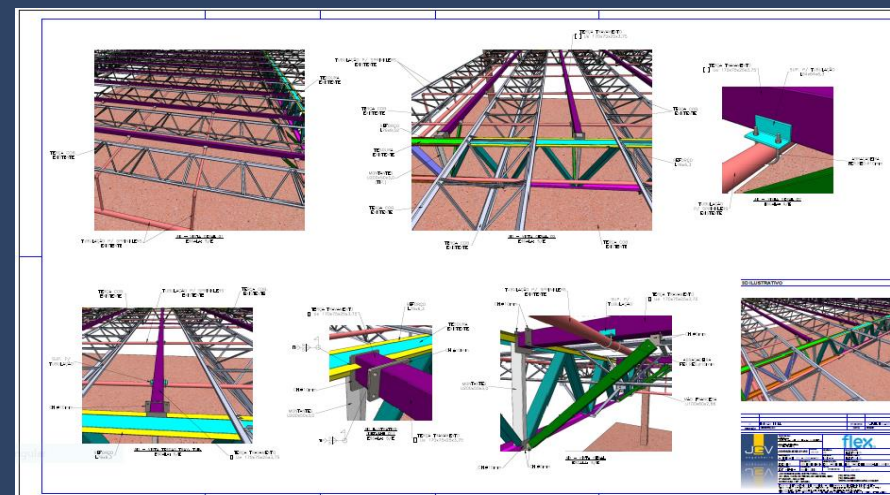
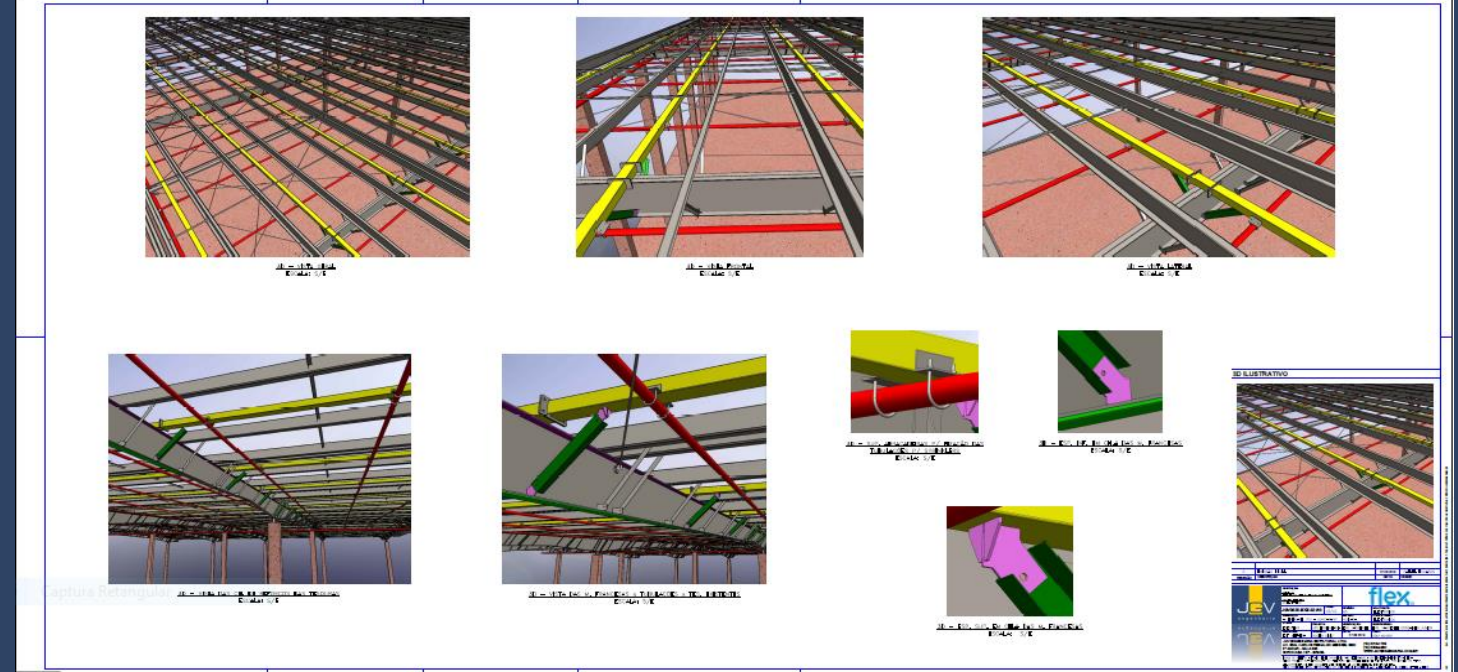
IPORANGA-SOROCABA /SP, BRASIL



Report and Structural Reinforcement Project for the installation of two new silos in existing structure, one weighing 100 tons and the other 150 tons, at Metso Fundição in Sorocaba / SP.

FLEX

KM 11 CASTELINHO -SOROCABA /SP, BRASIL



Structural reinforcement check and design for sprinkler installation disposition compliant to the FM Global standard, at the Flex factory in Sorocaba with a reinforcement line assembled to weld only in scissors, seeking savings and practicality, counting that the other pieces are all screwed. All of this in a 27,098m² area.

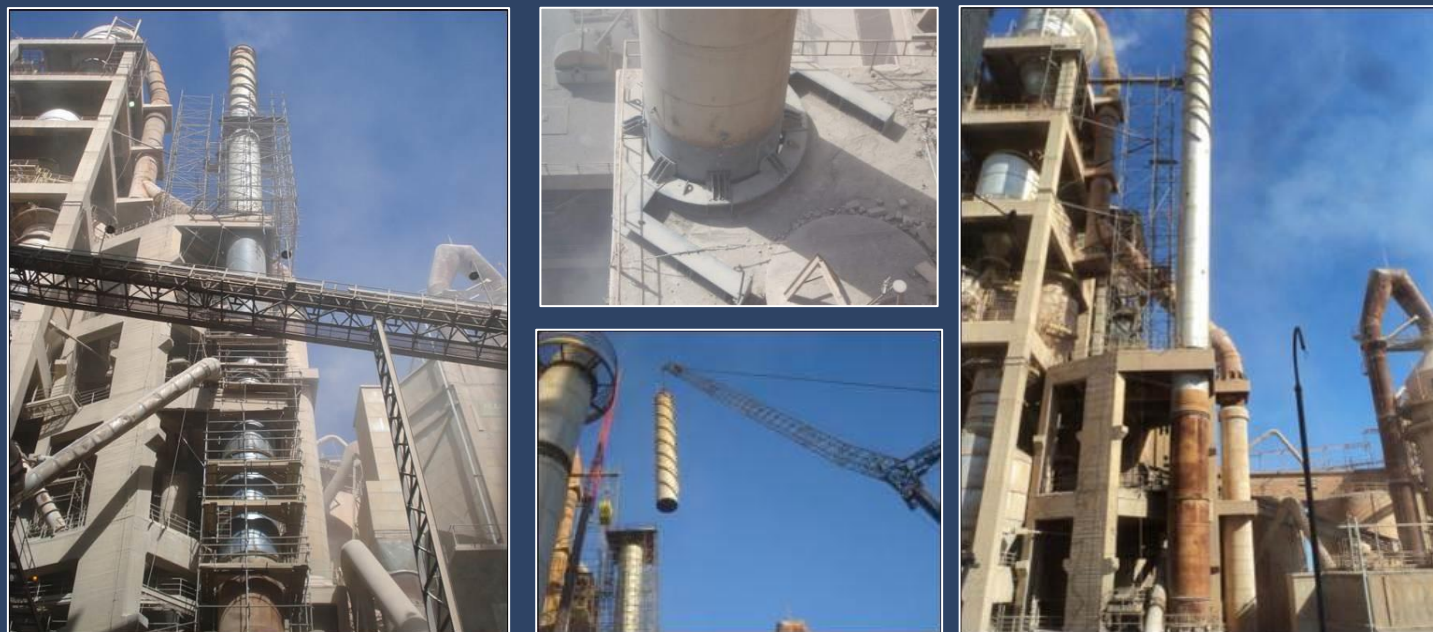
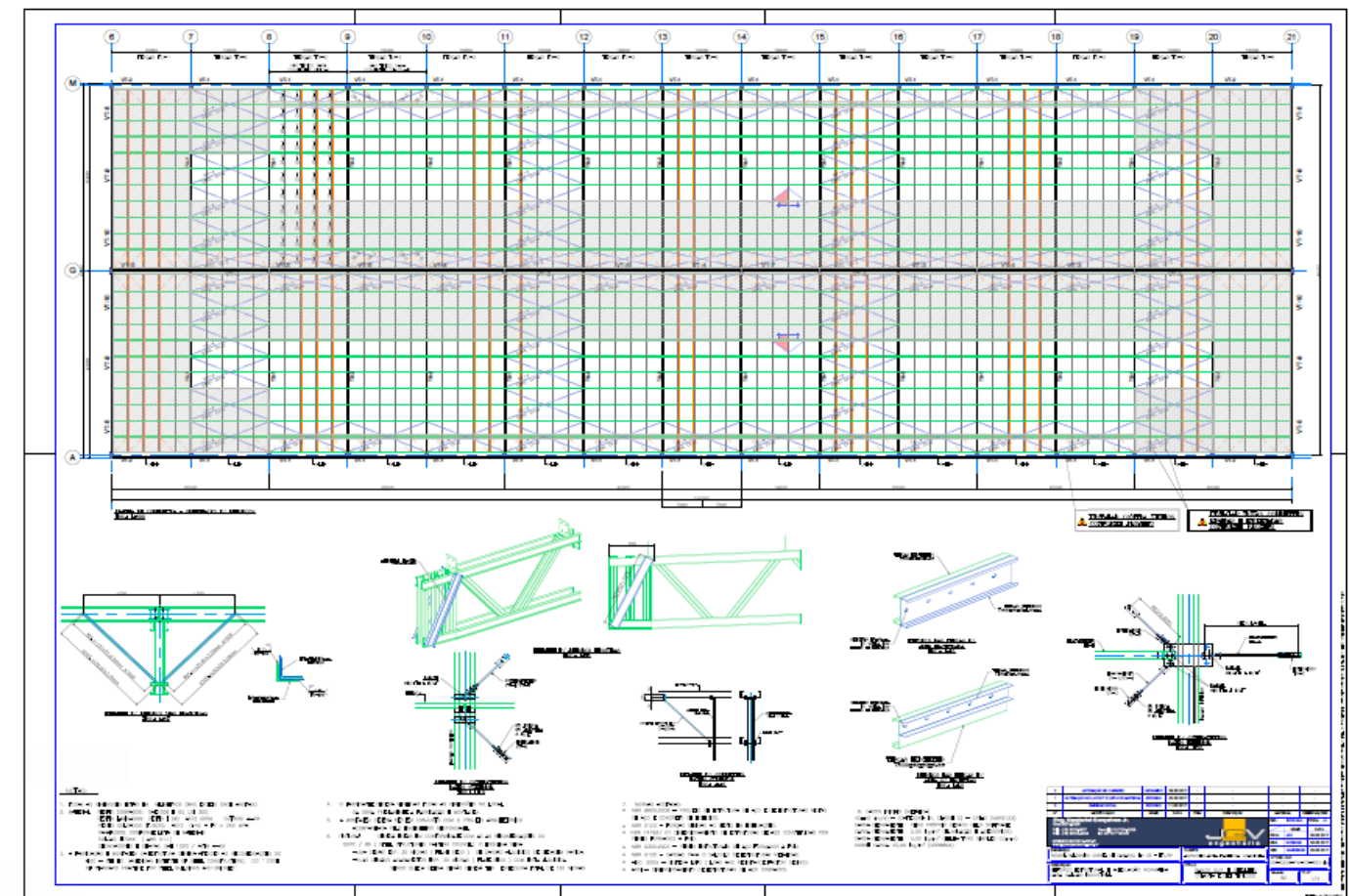
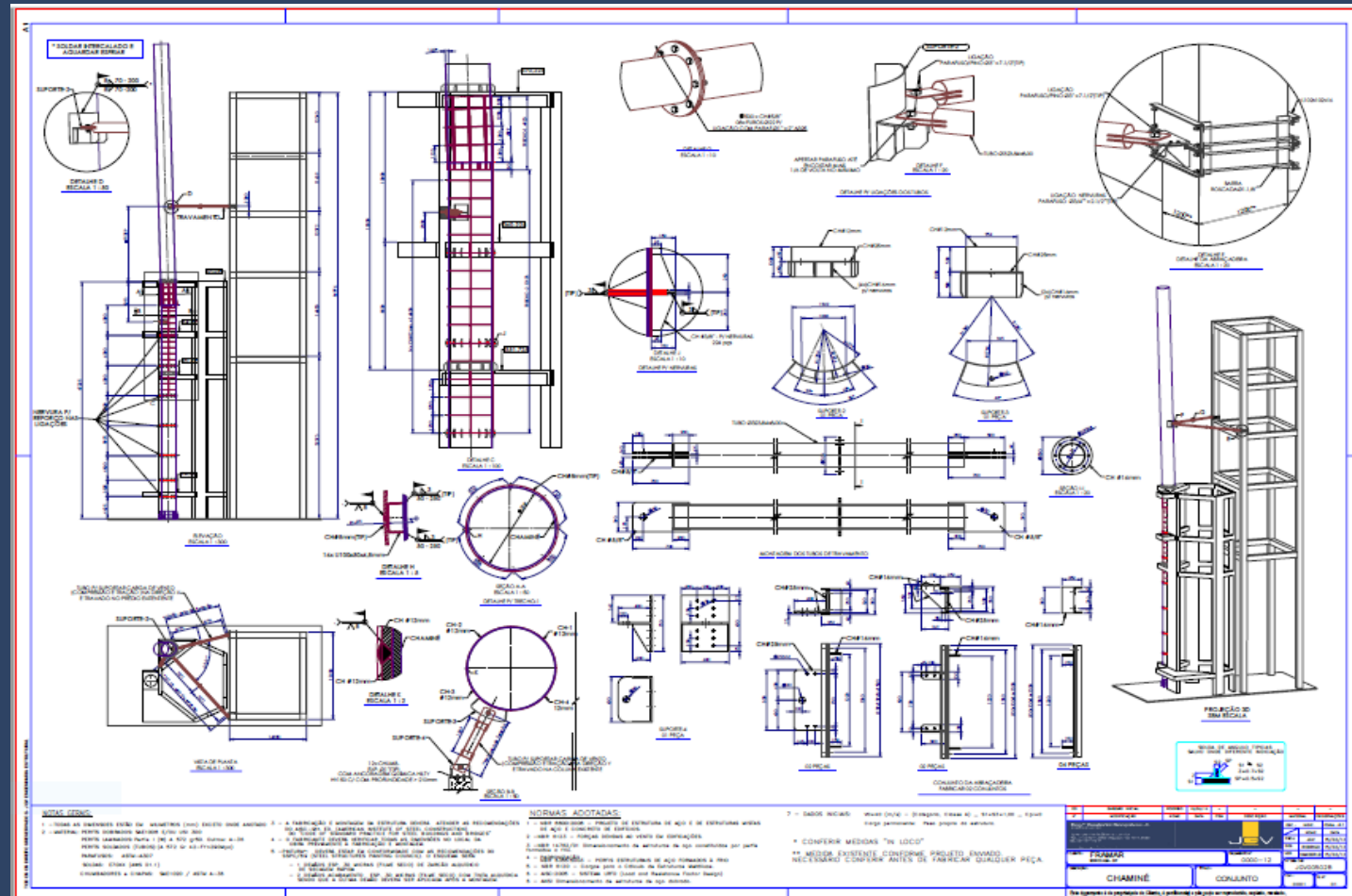
CIMPOR

APARECIDA DE GOIÂNIA – GO, BRASIL



FOX RECICLAGEM

PIRAPITINGUI -ITU /SP, BRASIL



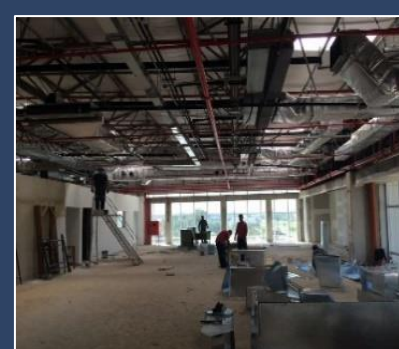
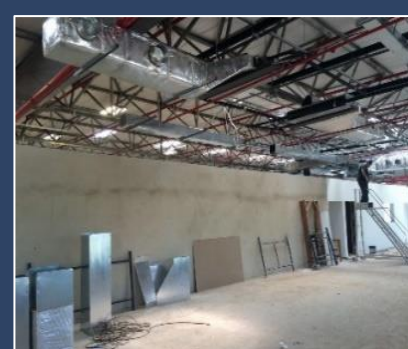
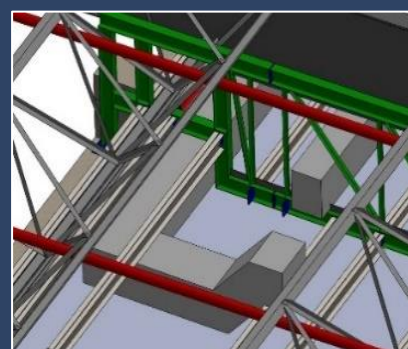
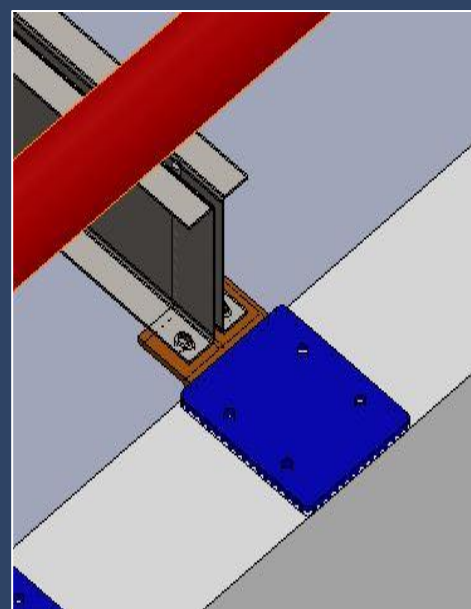
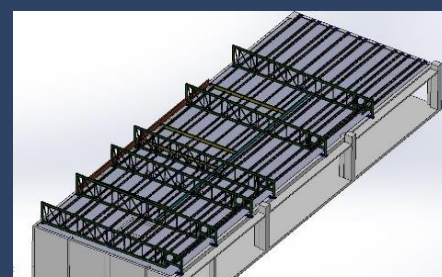
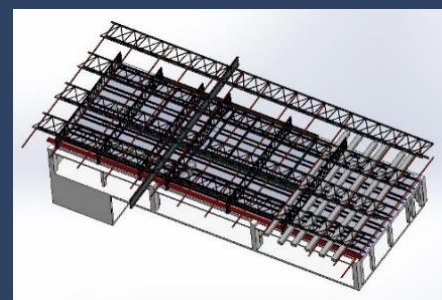
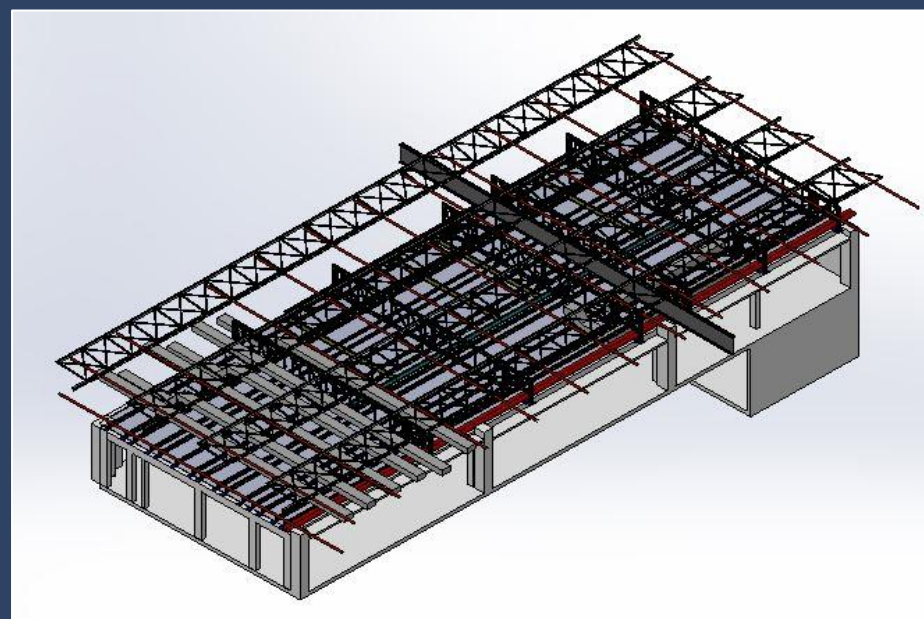
JGV Engenharia has partnered with Framar Engenharia to develop the structural reinforcement projects for a chimney, almost 100 meters high, which had been destabilized due to the high thermal loads that reduced the thickness of the chimney's metal plates, also aggravated by wind loads. The project developed urgently was conceived with metallic connections that made possible the displacement of the structure with the dynamic loads of wind and thermal.

Structural Report and Structural Reinforcement Project developed for an industrial shed, where the roof and the metallic closure presented excessive displacements and torsions, caused by the incorrect design and dimensioning of the up to 40 meters long metal beams, a situation aggravated with the incorrect execution of the structure and oxidation spots.

FLEX

KM 11 CASTELINHO-SOROCABA /SP, BRASIL

flex



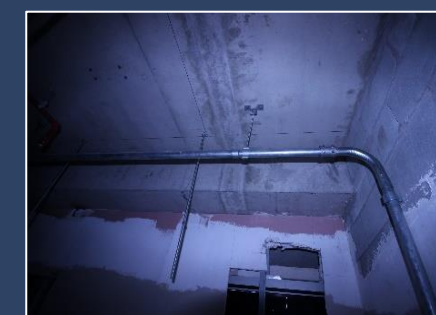
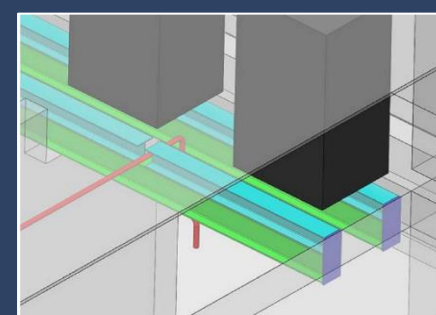
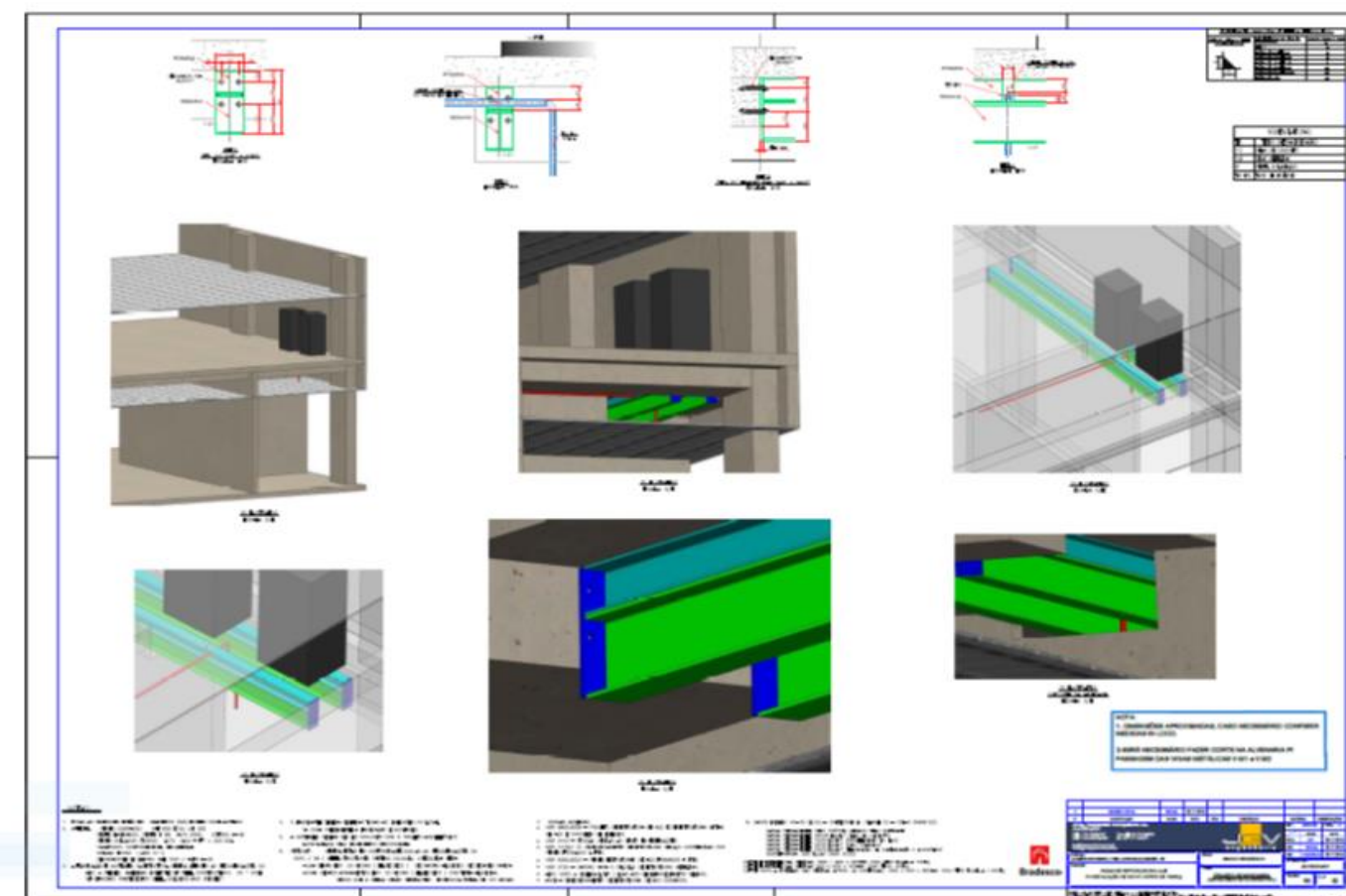
Report and Structural Reinforcement Project developed for the installation of retractable partitions and lining on the top floor of one of the Flex company's buildings in the Sinctronics building in Sorocaba / SP. The reinforcement was designed after the execution of the entire infrastructure of sprinklers, lighting, air conditioning, electrical and plumbing. Therefore, it was necessary to carry out a complete survey of all interferences at the site, and the reinforcements designed needed to be fully screwed at the site.

BRADESCO

ALPHAVILLE INDUSTRIAL-BARUERI /SP, BRASIL



Bradesco



Structural Report and Structural Reinforcement Project developed for the installation of two safes in one of Banco Bradesco Cartão's offices, where the reinforced concrete slab would not support the increased load of the two safes. With this in mind, JGV Engenharia designed the structural reinforcements to redistribute the loads to the building's beams and pillars. The challenge in this case was to ensure that the reinforcements were executed without interfering in the building's infrastructure, such as electrical, hydraulic, sprinklers and air conditioning.